

# RELI SLEEVE™

**RELIABLE** Group of Company

**ONLY MANUFACTURER OF INTERNALLY COATED INSERT SLEEVES / PIPE SLEEVES IN INDIA**

SPECIALITY : WE ARE THE ONLY COMPANY TO PRODUCE UPTO 72" OD INSERT SLEEVE / PIPE SLEEVE



Exporting to  
USA | Australia | Iraq | Ecuador

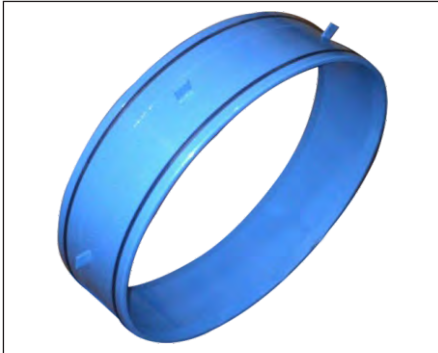


## *Insert Sleeve for Internally Coated Steel Pipes*

Corp Off. : C-16, Anand Bhuvan, 163/165, V.P. Road, Mumbai - 400 004. Maharashtra, India.

Mr. Rahul Mehta : + 91 9833938715 | Tel.: +91-22-43431313 (25 Lines) | 23894513 | 23894514 | Fax : +91-22-23894511

[www.relisleeve.com](http://www.relisleeve.com) | [sales@relisleeve.com](mailto:sales@relisleeve.com)



### General

The Reli Sleeve™ is designed to protect the girth weld portion from corrosion. Reli Sleeve™ offers a 100% internally coated pipeline.

### Advantages

1. Applicable in a wide variety of pipeline systems such as :-
  - a. Portable Water Pipeline
  - b. Injection & Re-injection Pipeline
  - c. Salt water Pipeline
  - d. Jet Fuel
2. Applicable for all sizes, grades.
3. Provides a 100% homogenous coating
4. Compatible with all kinds of coating
5. Easy & in-expensive installation
6. Flexible design to suit different applications



### Size

Reli Sleeve™ can be manufactured for OD & N.B. sizes starting from **2" to 72"**.  
Reli Sleeve™ can be manufactured in thickness from **6mm & above**.



### Material

#### Pipe / Plate

- API 5L PSL 1 & PSL 2 (Gr B to X 80)
- ASTM A53 / ASTM A106 /ASTM A333
- ASTM A36 / ASTM A516 Gr 60, Gr 65, Gr 70
- ASTM A671 / ASTM A672 / ASTM A691
- ASTM A312 / ASTM A358

Origin : Japan, Europe, USA

#### 'O'Ring

Origin : Europe

**Note :** Reli Sleeve™ can be manufactured in any size or grade depending upon the client's requirement.

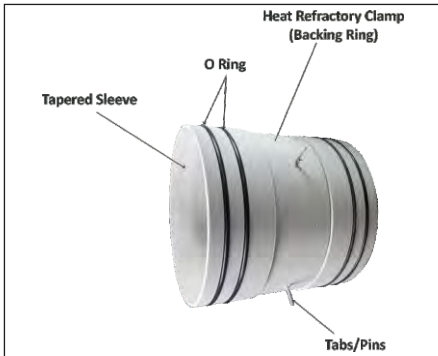
All material used for manufacturing sleeves are imported.



Corp Off. : C-16, Anand Bhuvan, 163/165, V.P. Road, Mumbai - 400 004. Maharashtra, India.

Mr. Rahul Mehta : + 91 9833938715 | Tel.: +91-22-43431313 (25 Lines) | 23894513 | 23894514 | Fax : +91-22-23894511

www.relisleeve.com | sales@relisleeve.com



### Feature

1. Sleeves are coated 100% internally & externally.
2. The edge of the sleeves are tapered to provide smooth flow of materials passing through the pipeline & to reduce turbulence.
3. A two-layer heat resistance mechanism with a heat resistance refractory tape & a heat resistance refractory clamp.
4. Two or more O-Rings to ensure the sleeve fits well into the pipeline.
5. Tabs/pins to maintain uniform distance between the pipe ends to ensure proper weld.

### Design

The Reli Sleeve™ is made up of carbon steel fitted with grooves which enables installation of heat resistance tape, clamp, O-rings. The sleeve is coated 100% on the external and internal. The O-Rings are fitted on the grooves at equal distance from the centre on both the sides. The O-Rings ensure the stability of the sleeve. The heat resistance refractory tape is installed in the centre groove which is protected by the heat resistance refractory clamp. The Tabs/Pins are welded to the clamp at equal distance from each other and are in straight line to ensure the both the pipe ends touch the tabs and create a gap sufficient for welding of the pipeline. The O-Rings are made up of high heat resistance materials. The tabs/pins are of the same metallurgy as the pipeline. The no. of tabs/pins depends upon the size of the sleeve. The no. of tabs/pins will increase with the O.D. of the pipe.



### Coating

The sleeves are coated 100% internally & externally with liquid or powder coatings. The sleeves can be coated depending upon the material flowing through the pipeline. Some of the most common coatings used for pipeline coatings are:-

- Corvel - 10-8158
- FBE 3M XC 6171
- Hempadur 45881
- Hempel-Hempadur 85671
- Interline 984
- Interzone 954
- Primer 3M Scotchkote 345
- Scotchkote 134
- Sigma EPH 7497
- Sigma Phenguard
- Sigma Phenguard 935
- Sigma Phenguard 940
- Sigma Line 2000
- Sigma Shield 1200
- Carboline Plasite 7159
- Enviroline 405 HT



Origin : USA, Europe

Corp Off. : C-16, Anand Bhuvan, 163/165, V.P. Road, Mumbai - 400 004. Maharashtra, India.

Mr. Rahul Mehta : + 91 9833938715 | Tel.: +91-22-43431313 (25 Lines) | 23894513 | 23894514 | Fax : +91-22-23894511

www.relisleeve.com | sales@relisleeve.com



**PROJECTS EXECUTED**

Client - ICCS (USA) End User - SRC - (Iraq)  
Project - Water Transportation

Size - 24" X Sch 40,  
24" X Sch 30  
(24" X Sch 40) X (24" X Sch 30)

Qty - 2500 Nos.



Client - Tex

Location - Ecuador

Size - 8" X Sch 100

Qty - 15 Nos.



End User - Petro Ecuador  
Project - (IPAD 400 Flowline) Crude Oil Petroleum

Size - 6" X Sch 40

Qty - 685 Nos.



**COATINGS FOR JOBS EXECUTED**



Coating : HEMPADUR 85671

**Description :**  
HEMPADUR 85671 is a two-component, amine adduct cured phenolic epoxy (novolac) coating with very good adhesion and high temperature, water and chemical resistance.

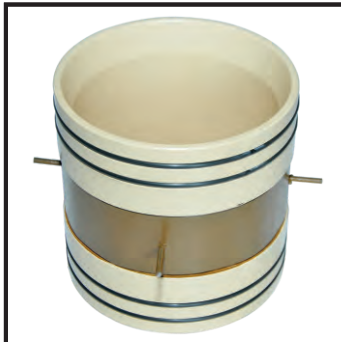
Size : 8" X Sch 40



Coating : INTERZONE 954

**Description :**  
INTERZONE 954 - A two component, low VOC, high solids, modified epoxy barrier coat designed to give long term protection in a single coat application. Will continue to cure when immersed in water & has excellent cathodic disbondment resistance.

Size : 24" X Sch 30



Coating : 3M™ Scotchkote™ XC-6171

**Description :**  
3M™ Scotchkote™ XC-6171 Fusion Bonded Epoxy Coating is a one-part, heat curable, thermosetting, powdered epoxy coating designed for interior corrosion protection of production tubing, line pipe, and fittings. When applied over a primer, XC-6171 meets Saudi Aramco seawater and sour gas service requirements.

Size : 6" X Sch 40



Coating : 3M™ Scotchkote™ 134

**Description :**  
3M™ Scotchkote™ 345 Liquid Phenolic Primer is a one-part phenolic base primer designed specifically for application to metal surfaces prior to topcoating with Scotchkote Fusion Bonded Epoxy Coating. When properly applied, Scotchkote 345 primer and topcoat system provide excellent resistance to CO2, H2S, CH4, petroleum distillates and brine at elevated temperatures and pressures.

Size : 6" X Sch 40



Coating : Carboline PLASITE 7159

**Description :**  
A water-resistant epoxy coating polymerized with a polyamine type curing agent. Also available in a high abrasion resistant version.

Size : 3" X Sch 40



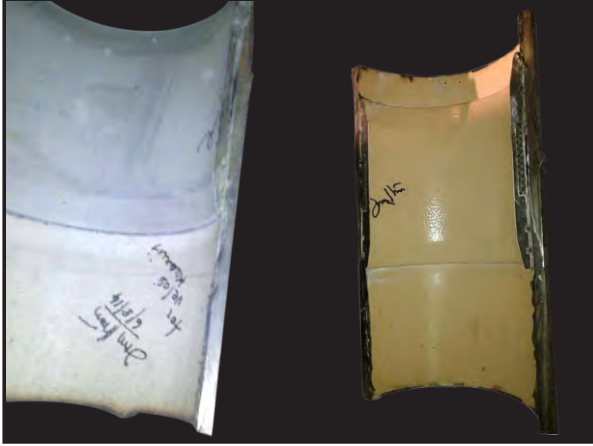
Coating : INTERTHERM 228

**Description :**  
A highly crosslinked, two component, high build Epoxy Phenolic coating which combines properties of corrosion and chemical resistance when used in high temperature service.

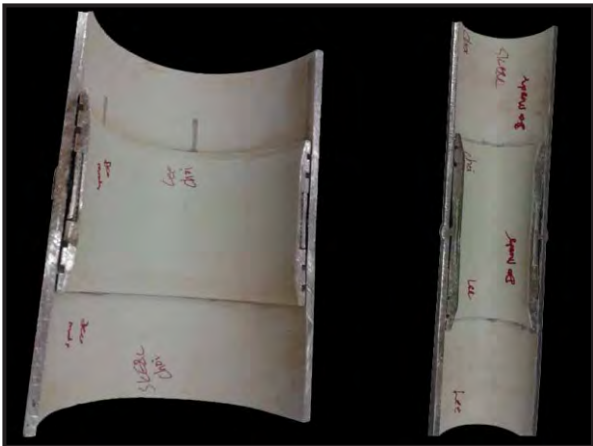
Size : 8" X Sch 100



## MOCK UP TEST



Coating : Interzone 954 & 3M Scotchkote XC6171  
Size : 6" X Sch 40  
TPI : Velosi



End User : Joint Operations  
Contractor : SKEC  
Coating : Hempel - Hempadur 85671  
Size : 3" x Sch 40, 8" x Sch 40, 16" x Sch 40,  
TPI : GL



End User : Petro Ecuador  
Coating : Carboline Plasite 7159  
Size : 6" x Sch 40,  
TPI : SGS

**We are looking for Business Partner  
Please feel free to Contact us.**



**Corp Off. :**

**Reliable Pipes & Tubes Ltd.**

C-16, Anand Bhuvan, 163/165, V. P. Road, Mumbai - 400 004. Maharashtra, India.  
Phone : +91 22 4343 1313 (25 Lines) 2389 4513 | 2389 4514 | Fax : +91 22 2389 4511  
www.relisleeve.com | sales@relisleeve.com

**Head Off. :**

29-B, Nakoda Bhuvan, Sindhi Lane, Mumbai - 400 004. Maharashtra, India.

**Branch Off. :**

20, Gopal Nagar, Near Tilak Nagar Metro, Jail Road, Delhi - 110 018

**Unit 1 :**

A 791/01, TTC Industrial Area, Village Khairane, Navi Mumbai - 400 710

**Unit 2 :**

81 KIDC, Poman Marg, Kaman, Vasai, Thane

**Stockyard**

Plot No. 555, Road No. 4, KWC, Kalamboli, Dist. Raigad,  
Maharashtra, Pin Code - 410 218.

**Logistic**

Plot No. 1112 / 1113, Road No. 12, Shree Opera House,  
Kalamboli Steel Market, Dist. Raigad, Maharashtra.

**Packaging**

Plot No. 726, Road No. 6, Opp. Disma Dharam Kata, Kalamboli, Dist. Raigad, Maharashtra.

**www.relisleeve.com**  
**sales@relisleeve.com**